

ACE GRADUATION DINNER

6:00PM

MAY 11TH 2010

ALABAMA POWER CORPORATE AUDITORIUM 600 N 18TH ST · BIRMINGHAM, AL

Having the opportunity to come in contact with different individuals that are where you would like to be one day. ACE gave me the inspiration to continue to set my goals high and achieve them.



DAISHA GRICE
Auburn University, 2012
Mechanical Engineering



Career Directions for Students in
Architecture, Construction and Engineering

ACE GRADUATION DINNER 2010 • MAY 11th, 2010 : Alabama Power Corporate Auditorium • 6:00 pm

SPONSORSHIP LEVELS:

- PRESENTING DINNER SPONSOR** (3 available) – \$ 5,000 includes 2 premium tables for 8, exclusive "Named" Scholarship/logo placement in program and all supporting event promotions, special verbal recognition at event
- PLATINUM** – \$3,500 includes exclusive "Named" Scholarship, 2 premium tables for 8 and logo placement in program
- GOLD** – \$ 2,500 includes joint "Named" Scholarship, 2 premium tables for 8 and logo placement in program
- SILVER** – \$ 1,000 Sponsor includes 1 premium table for 8 and recognition at table and in program
- BRONZE** – \$ 500 Sponsor includes 4 dinner tickets and recognition in program

INDIVIDUAL TICKETS: Individual: \$ 150 Number of Tickets Requested at \$ 150

I am unable to participate, but would like to contribute \$ _____ to the ACE Mentor Program, helping to sponsor young adults' participation in the program and scholarship opportunities.

Enclosed is my check in the amount of \$ _____ made payable to the ACE Mentor Program of Alabama. Please submit contributions and contact information by April 28, 2010 to:

ACE Mentor Program of Alabama attn: Aimee Cotten, Robins & Morton 400 Shades Creek Parkway Birmingham, AL 35209
at acomen@robinsmorton.com 205.803.0168(p) 205.803.0247(f)

Additional information about the event will be sent to the person listed below:
NAME: _____
ADDRESS: _____
PHONE: _____

ORGANIZATION: _____

EMAIL: _____

ATTENDING _____ Donate remaining seats to students & families
I would like to invite a student to sit at our table

I would like more information on becoming an active partner of the ACE Mentor Program.

**Thank you for your support of the ACE Mentor Program of Alabama. For more information please contact
Phil Massa, Sponsorship Coordinator at 205.439.8603 or pmassa@robinsmorton.com.**

WE NEED YOUR SUPPORT:

The 2009-10 class of ACE students and mentors have committed more than 3000 hours developing hands-on design projects, participating in site visits and preparing for building competitions. Through these and other learning activities, they have gained an understanding and appreciation for our industry – but we don't want their learning to stop now! **Please support the future of these promising students and the future of our industry by sponsoring the ACE Alabama Graduation Dinner scheduled for May 11, 2010.** A sponsorship commitment form is included for your convenience. All sponsorships directly fund scholarships for these students who are currently interested in pursuing careers in architecture, construction, engineering, interior design, and landscape architecture – thanks to the ACE program.

WHERE IS ACE TODAY?

- Over 40 students accepted into program
- Meetings every other Thursday with an average of over 30 students in attendance
- 12 schools are involved in the program
- Graduation banquet each Spring is the primary fundraiser for the program, with the addition of multiple fundraising events throughout the year

2010 GOALS

- Average 30-40 students per year
- Two Groups representing 8-10 schools
- Create a Design Competition
- Funding through grant writing
- Grow mentor and corporate support base
- Increase awareness of ACE program

At the beginning of the ACE program I didn't know what I wanted to do, but the program clarified what each discipline does to benefit society and displays the differences between architecture, construction management, and engineering.

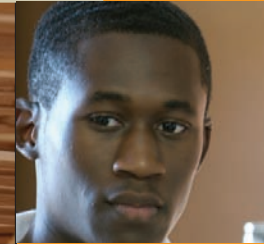
MARDECIAL HINES

Alabama A&M University, 2012 · Civil Engineering

PARTICIPATING SCHOOLS

FOR 2009-2010 SCHOOL YEAR

CENTRAL PARK CHRISTIAN
CLAY-CHALKVILLE HIGH SCHOOL
FAIRFIELD HIGH SCHOOL
G.W. CARVER HIGH SCHOOL
HOLY FAMILY CHRISTO REY HIGH SCHOOL
HOMWOOD HIGH SCHOOL
HUFFMAN HIGH SCHOOL
JOHN CARROLL HIGH SCHOOL
MINOR HIGH SCHOOL
RAMSAY HIGH SCHOOL
TARRANT HIGH SCHOOL
WOODLAWN HIGH SCHOOL



YESUFU O'LAPIDO
Auburn University, 2012
Architecture

I already knew that I wanted to be an architect, even though I wasn't completely sure what an architect was. ACE not only helped me to better define what an architect and architecture was, but the ACE program also introduced to me a new way to view my surroundings.



www.acementor.org

printing
provided by:

